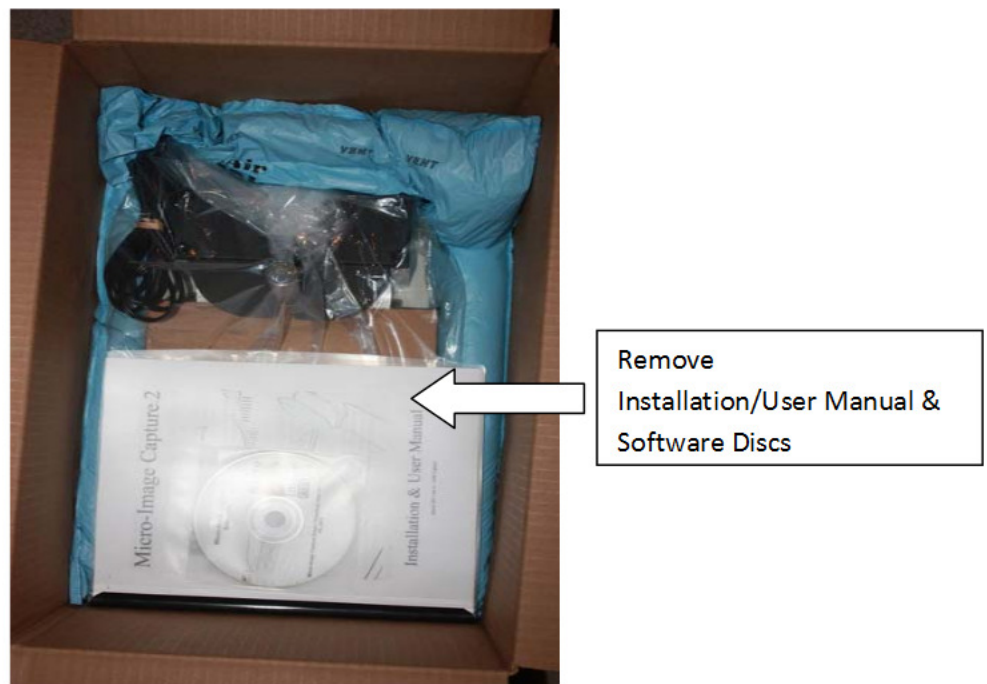


Micro-Image Capture - Unpacking Instructions

Step 1



Step 2



Step 3

Remove Micro-Image Capture base unit from packing foam & place on desk.



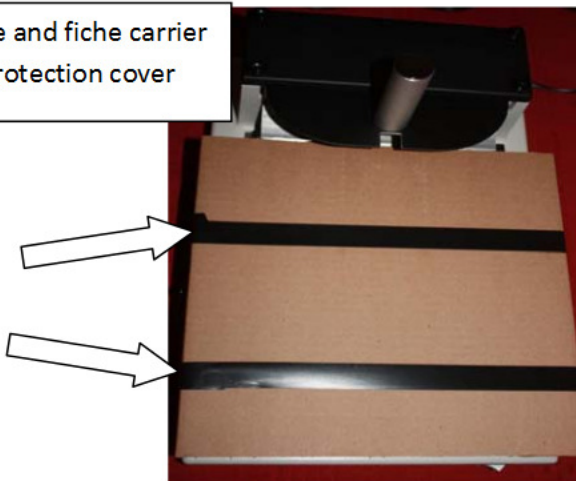
Step 4

Remove Micro-Image Capture base unit from plastic packing



Step 5

Remove tape and fiche carrier cardboard protection cover



Capture Head mounting post in place with 19-48X model, please install on 7-48X model



Step 6



Open capture head box and remove protective foam

Step 7



Carefully remove capture head and place on the Micro-Image Capture base unit by sliding it onto the post

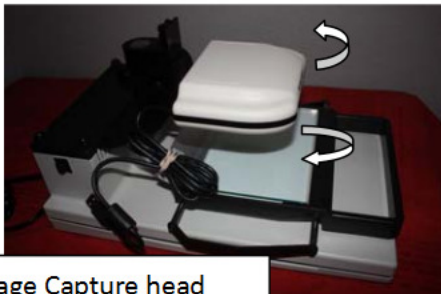
Step 8



After sliding on capture head, insure it is straight and secure by tightening securing knob * 7-48x model includes support ring on mast to be placed under this head lift mechanism

4 knurled securing knobs are used to adjust camera platform & optical alignment, **DO NOT TOUCH!**

Step 9

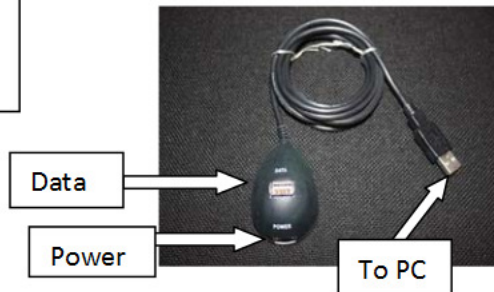


Micro-Image Capture head can pivot left to right in order to straighten any slight image skew onscreen

Step 10



Snap capture head USB cable into side holder leaving some slack for raising and lowering head.



Your MIC system is a low energy usage, USB powered device. Connect the camera head to the "Data" port and the base unit to the "Power" port. Load your software & driver discs prior to connecting the main USB cable to your PC.

Unpacking & assembly is complete! Please refer to the installation / user manual to complete the installation of your Micro-Image Capture